

RMN NEWSLETTER

CORONA (COVID-19)

The Corona virus (COVID-19) has an enormous impact on the world population and it affects our way of behavior in a way we haven't experienced before. The Dutch government gave all kind of restrictions, asked us to stay alert and to pay attention to each other. Health and Safety has the biggest priority at RMN and we follow the guidelines given by the RIVM and the Dutch Authorities in the best possible way to prevent contamination between people.

When possible our crew will work from home. At our premises it is only allowed to work when there is the need for it. This mean also that we do not accept visitors. Our team is available by phone and E-mail to answer your questions and taking care for your quotations.

Our Warehouse is open for all type of logistics to ensure that orders will be shipped out. For this area also the distance of at least 1,5 meter between persons is of major importance so couriers and drivers please follow our guidelines.

Everyone at our premises is regular washing their hands and physical contact needs to be avoided.

We do everything we can to serve you in the best possible way but we ask you to understand that some products due to the Corona are not available at this moment.

For non-related to healthcare products we have a large stock available.

We will keep following the rules made by the Dutch authorities as long as they remain and we ask you all to take care of your own health but also of others.

On behalf of the entire team of RMN we wish you all the best in the current situation.



April 2020

doublepower!!
industrial lighting | intelligent | efficient



DOUBLEPOWER!!

RMN is the exclusive distributor for the manufacturer doublepower!! in the Benelux.

This European manufacturer located in the Czech Republic is producing and developing lighting fixture for customers with the highest demands for reliable and economic operation in demanding industrial conditions for more than 10 years.

They guarantee long-term performance and exceptional energy savings.

The lighting solutions can be used for buildings up to 30 meter high. Special thermal management ensures a life-span of over 100.000 hours for luminaires and electronics as well.

With the special design of the LED modules which are deeper embedded in the body, special reflectors and optics achieves doublepower!! low levels of glare while maintaining very high efficiency of the luminous flux.

All doublepower!! luminaires has no stroboscopic effect with rotating machines.

The High quality LED Drivers are from Tridonic and are produced in Austria.

For areas with very high ambient temperatures doublepower!! developed the TaMAX version which can be used up to +65°C without degrading. They are even tested up to +75°C.

doublepower!! SEA LED Luminaire

The for RMN developed doublepower!! SEA LED IP68 luminaire is now in it's final version available. A high luminaire efficacy up to 184lm/W with a long life span of 80.000 hours (L80B10). The luminaire is specifically developed for Marine Environments. Available in Polycarbonate and in Borosilicate glass. End covers are made from Stainless Steel AISI316L. Can be ordered with through wiring. The Stainless Steel brackets are always included. The luminaire is equipped with a special breather to prevent condensation moisture inside.

(Left Picture).

doublepower!! TREE LED Luminaire

The doublepower TREE is the **ultimate engine room luminaire** with th TaMAX version. The luminaire is extremely compact in height makes it possible to use in narrow spaces.

(Picture below).

RMN NEWSLETTER

MASCOAT

The global leader in insulating coatings

MASCOAT MARINE DTM

Marine Thermal Barrier Coating

The coating employs the best water-based coating technology and contains no harmful elements. Unlike other insulation methods, Mascoat Marine-DTM bonds directly to the substrate or primer, leaving no room for corrosion to take hold. Direct bonding gives the coating the ability to protect your vessel without degradation of the substrate for many years to come. By using Mascoat Marine-DTM coating system, you can rest assured that your vessel is protected and that the interior accommodations will be comfortable.

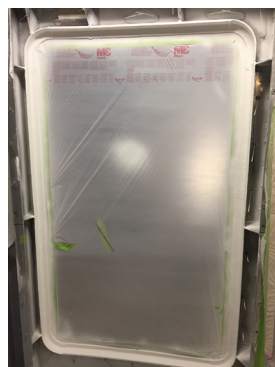
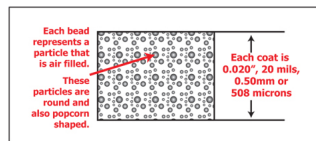
Users of Mascoat Marine-DTM coating have found that the coating replaces most conventional insulation methods. While yielding the same thermal barrier capabilities, installing costing drastically less. Many vessel owners have saved up to 50% on total installed costs over conventional insulation. Best of all, the coating is extremely lightweight. This allows easy application around difficult areas such as stiffeners and other tight areas without adding excess weight.

Since the coating applies rapidly, labor and construction time-frame savings escalate by using Mascoat Marine-DTM. This means that your normal thermal barrier methods can now be performed by in-house painting crews instead of using subcontractors. Productivity will increase and gives the customer a better product in a shorter time frame.

An added benefit is the sound reduction of airborne structural noise. By using Mascoat Marine-DTM your vessel automatically becomes quieter by reducing structural noise from 50-80%. The product is capable of a 1-3 dB drop in airborne structural noise or a 28 SRC factor (for more about decreasing sound in vessels, please see the sound damping coating Mascoat Sound Control-dB sound damping coating.)

RECOMMENDED AREAS FOR MASCOAT MARINE-DTM

- WEATHER EXPOSED SURFACES
- STIFFENERS
- OVERHEADS
- INTERIORS
- PIPES
- WALLS
- ENGINE ROOMS



DATA LINK

Portable LED Light Solutions

RMN Distributor for Data Link Croatia

RMN is since January 2020 the exclusive Benelux distributor for DataLink. This European manufacturer develop and produce all its products in Croatia. The company has a long experience in special LED light solutions for Marine environment especially wet areas on board and during dry dock operations.

DATA LINK GalaLed

GalaLED is a revolutionary model of portable, temporary work lighting intended for use in the marine industry – shipbuilding – ship repair and maintenance, offshore – oil and gas and construction industries.

Due to its low, safety operating voltages – 24VAC, 42VAC, 110VAC/VDC and 24 VDC all GalaLED lighting models can reliably and safely be used during various technological phases and work processes – steel work, sandblasting, high pressure wash and anti-corrosion protection.

All GalaLED lighting models are made of the same high quality robust materials that make them very resistant without the risk of damage or brakeage. The lamps have IP67 degree of protection and mechanical protection IK10.

Compared to traditional work lamps, Gala LED lamps are very practical and easy to use.

The GalaLED work lighting system contributes to increased productivity and safety of workers in accordance with the CENELEC norm HD63751 and increased efficiency of all work processes.

The GalaLED lighting system makes your service and processes cheaper, faster and more competitive.

The GalaLED work lighting system generates significant financial savings in:

Energy consumption > 80% in comparison with traditional work lighting

Equipment and material used for the new lighting system

Lighting maintenance costs

Lighting installation time

GalaLED lamps have a very simple connection to power supply.

They can be connected to three dimensions of cable – 2 x 1,5mm² and 2 x 2,5mm² for short lines and 2 x 6mm² for longer lines with a bigger number of lamps connected in a series.



RMN NEWSLETTER

WENCON during the Corona Crisis

Especially in a difficult time as we are faced with at this moment the Wencon Repair Kits shows it advance for the ship crew. The crew has to stay on board to prevent contamination with Corona. This means they have to do all kind of maintenance jobs and repairs without having assistance from service engineers from shore on board.

The WENCON Repair Kit these days

The Wencon Repair Kit is a great tool, equipped with the right 2-component products for many applications and a complete manual that guides the crew step-by-step through the repair process to have a successful repair job. Many vessels around the world are sailing today with a Wencon Repair Kit on board and have all the benefits. We have daily orders with refills for the used products of the Repair Kits what shows that the system works as it is developed for.

The WENCON assistance these days

Wencon, RMN and the global partners assist from behind their computer also many shipowners with repairs on board. We are able to communicate via different media systems such as Phone, E-mail, Skype, Facetime etc. and guide them through the repair process when questions are made or the crew has any doubts how to take care of the repair job. In this hard times we are here to be your back-up and support you as good as possible.

What can a WENCON Service Partner do

Also our Wencon Service Partners can act very quickly in case big repairs has to be done.

The ship can land for example a pump, the Wencon Service Partner make a pick-up at the quay, take care for the repair job at his workshop and returns the repaired item to the quay and the ship can take it safe on board.

In case a service engineer must come on board the Wencon Service Partners knows exactly how to act and assist in a safe way to prevent Corona contamination on board.



WENCON Scrubber Pipe Repair Kit

Wencon developed special Scrubber Pipe Repair Kits.

Over the years we assist many exhaust gas scrubber manufacturers with problems as corrosion in the scrubber, corrosion damage in the steel end pipe which goes through the hull (as well seawater inlet as seawater outlet pipes), vibration damage, and GRP/GRE pipe damages.

The problem with GRP/GRE pipes is that the pipe surface has to be completely dry for a repair application in the normal way.

With **Wencon UW Products** this pipe repair jobs can be carried out even on a wet surface. The adhesion of the Wencon UW products is superb and the curing time is relatively short. Curing time can be reduced using infrared light.

The UW products are tested with and suitable for infrared curing. Curing with infrared radiation can reduce curing time significantly. Result can vary, depending on circumstances and equipment used.

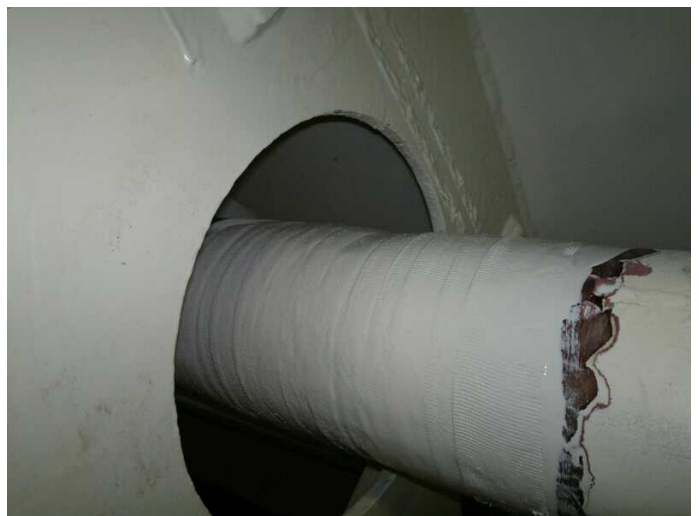
The Wencon Scrubber Pipe Repair Kit is a great tool for the crew on board to make a decent repair on the scrubber GRP/GRE Pipes and reduce downtime of the vessel.

The Scrubber Pipe Repair Kit is a great success. One big shipowner ordered already 100 of those Wencon Scrubber Pipe Repair Kits as an emergency system in case of.

The Wencon Scrubber Pipe Repair Kits are available for pipe diameters of 250 - 500 - 1000 mm.

For corrosion problems in the scrubber system we can also assist and advise you how to repair this. We already have a good experience in this.

WENCON®



Wencon your daily Repair and Maintenance System on Board for already over 30 years

Repair Management Nederland B.V. – Jade 300 – 3316 LJ Dordrecht – Netherlands
Phone +31 (0)85 27 32 216 – email info@rmn.eu - www.repairmanagement.nl

RMN NEWSLETTER

MIKO MARINE

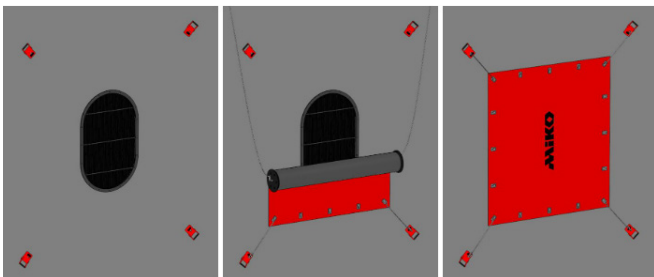
Miko Marine is a manufacturer from Norway with a range of solutions for In-water survey, Underwater repair, Marine Salvage & Oil Spill prevention and fast and safe oil removal from sunken shipwrecks.

RMN is since 2009 the Miko Marine distributor for the Benelux and supplied many shipowners and shipyards with the Miko Marine Solutions.

Well known is the **Miko Marine Magnetic Plaster** used for in water repair to seal sea chests, water inlets and outlets directly in the water. The repairs can be done without the need of a drydock and big savings will be achieved.

Miko Marine Magnetic Plasters are sold separately and as complete kits such as Tanker Kits or Emergency Respones Kits. The Kits contain many other Miko Marine Products to have the right equipment the moment it is needed.

Customers are not only commercial shipping companies but also many naval forces have Miko Marine Kits on board. The products are used frequently for floating offshore platforms, FPSO's and other large vessels who have no possibility to go to drydock. They rely on the **DNV-GL approved** system from Miko Marine to seal the under water openings and make safe repairs.



MIKO MARINE POLAR KIT

New from Miko Marine is the Polar Kit.

A new system has been developed for applying Miko magnetic patches to ships that have been holed by ice in Polar waters. This is expected to be of particular value to vessels of all types that are applying for Polar Code certification as it will physically demonstrate their preparedness for dealing with hull damage that might be caused by ice.

The new Miko Polar Kit is manufactured in Norway and contains a selection of magnetic patches and high-power magnets that can be lowered and secured over an area of hull damage. Miko patches are well-proven and regularly used around the world where they have prevented the sinking of numerous vessels since their launch in 1997. In an emergency, a patch made from a strong laminate that includes a flexible magnetic layer, can be lowered over the hole where it will stick like a giant fridge magnet. The magnetic adhesion of the patch combined with the outside water pressure closes the hole and keeps it securely in place. Additional high-power magnets might also be used to maintain the seal until the ship is safely in dock.

Studies have shown that that ice damage is most likely to occur near or just below the water line so the new Polar Kit has been developed to deal with these situations effectively. It contains a system of handling lines pre-rigged through magnets that are attached to the ship's hull above and below the damaged area. These enable ships to lower and fasten a magnetic patch over a hole without the use of divers and thereby secure the vessel against water entry.

Studies have shown that that ice damage is most likely to occur near or just below the water line so the new Polar Kit has been developed to deal with these situations effectively. It contains a system of handling lines pre-rigged through magnets that are attached to the ship's hull above and below the damaged area. These enable ships to lower and fasten a magnetic patch over a hole without the use of divers and thereby secure the vessel against water entry.

THE IMO POLAR CODE

Increasing Polar traffic prompted the **IMO** to introduce the **Polar Code** in 2017 to increase vessel safety and prevent pollution hazards. Ships certified as conforming to the Code are consequently acknowledged as being prepared and technically equipped for dealing with the Polar environment. To achieve this certification ships must undergo a thorough approvals process. They must be able to demonstrate that the ship and crew can cope with Arctic emergencies and are capable of dealing with any problems they might encounter. The dangers of unexpected ice-damage are such that **even Ice Class vessels** are at risk and must be able to show an ability to deal with incidents should they arise. Miko believes that the new Polar Kit will help demonstrate this ability.

The kit consists of the well known patented and **DNV-GL** qualified Magnetic Patches, Miko Plaster® and adequate flexible handling- and installation tools enabling subsea installation without divers or ROV's.

