

WELCOME TO THE #EFFICIENCYFAMILY



LED Floodlight PM COLOSSUS 2-module

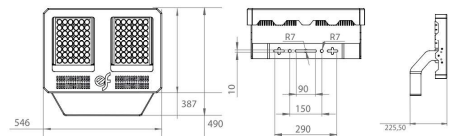
Professional LED Floodlight with large dissipation area of **standard 90°**
 Construction made of sheet steel and internal body of high performance aluminium injection body with high performance coating, black color with a 4 mm tempered glass and IK08 impact resistant.
 Fireproof internal wiring up to 300°C with high strength and flexibility.
 Symmetric and asymmetric internal louvres specially designed to cover large surfaces, improve directional light flow and avoid glare. Adjustable bracket.
FOR MARINE ENVIRONMENTS optional with certified **anti-saline coating** available and doesn't affect the heat dissipation of the fixture. For chemical environments there is an optional anti-corrosion coating available.
 LED Driver IP67, rectangular grey, adjustable 1-10V. Complete with IP68 Connector.
 LED 3535 module [L80B10] with superior efficacy **up to >176 lm/w.**
 Estimated useful life superior to >100.000 hour.
 5 years manufacturers warranty, (optional 10 year).
 Available light colors 2700K, 4000K and 5000K (standard color 4000K) CRI >70.
 Voltage 95/270V 48/63Hz.
 Protection IP66 IK08 (On request IK10).
 Power factor ≥ 96% (cos φ ≥ 0,96).
 Overvoltage protection 6KV.
Breather valve equals temperature inside and outside, reducing temperature and prevent condensation inside.
 Ambient temperatures -40°C - +60°C.
 Total weight 14 kg.
 Optional available with emergency battery, optional movement sensor, optional DALI protocol, RMS, CRI 80 and CRI 90, optics 10°, 30°, 60°, 60°.
 Developed and produced in SPAIN EU.



Breather Valve



Article No.	Description	Wattage	F-Lumen	LxWxH mm
83NTE1600	PM-COLOSSUS 42K	246/265	40.155	546 x 490 x 226
83NTE1601	PM-COLOSSUS 55K	320/344	52.476	546 x 490 x 226
83NTE1602	PM-COLOSSUS 70K	400/430	65.595	546 x 490 x 226
83NTE....P	Optional Anti Saline Coating	-	-	-



LED Floodlight PM COLOSSUS 3-module

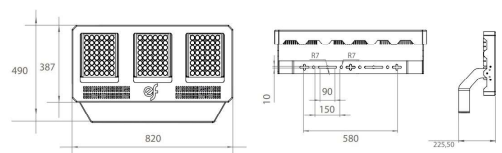
Professional LED Floodlight with large dissipation area of **standard 90°**
 Construction made of sheet steel and internal body of high performance aluminium injection body with high performance coating, black color with a 4 mm tempered glass and IK08 impact resistant.
 Fireproof internal wiring up to 300°C with high strength and flexibility.
 Symmetric and asymmetric internal louvres specially designed to cover large surfaces, improve directional light flow and avoid glare. Adjustable bracket.
FOR MARINE ENVIRONMENTS optional with certified **anti-saline coating** available and doesn't affect the heat dissipation of the fixture. For chemical environments there is an optional anti-corrosion coating available.
 LED Driver IP67, rectangular grey, adjustable 1-10V. Complete with IP68 Connector.
 LED 3535 module [L80B10] with superior efficacy **up to >178 lm/w.**
 Estimated useful life superior to >100.000 hour.
 5 years manufacturers warranty, (optional 10 year).
 Available light colors 2700K, 4000K and 5000K (standard color 4000K) CRI >70.
 Voltage 95/270V 48/63Hz.
 Protection IP66 IK08 (On request IK10).
 Power factor ≥ 96% (cos φ ≥ 0,96).
 Overvoltage protection 6KV.
Breather valve equals temperature inside and outside, reducing temperature and prevent condensation inside.
 Ambient temperatures -40°C - +60°C.
 Total weight 25 kg.
 Optional available with emergency battery, optional movement sensor, optional DALI protocol, RMS, CRI 80 and CRI 90, optics 10°, 30°, 60°, 60°.
 Developed and produced in SPAIN EU.



Breather Valve



Article No.	Description	Wattage	F-Lumen	LxWxH mm
83NTE1620	PM-COLOSSUS 84K	475/511	78.048	820 x 490 x 226
83NTE1621	PM-COLOSSUS 100K	565/608	93.705	820 x 490 x 226
83NTE1622	PM-COLOSSUS 120K	675/726	111.907	820 x 490 x 226
83NTE....P	Optional Anti Saline Coating	-	-	-



NTE Sistemas PM COLOSSUS Series LED Floodlights IP66



LED Floodlight PM COLOSSUS 4-module

Professional LED Floodlight with large dissipation area of **standard 90°**

Construction made of sheet steel and internal body of high performance aluminium injection body with high performance coating, black color with a 4 mm tempered glass and IK08 impact resistant.

Fireproof internal wiring up to 300°C with high strength and flexibility.

Symmetric and asymmetric internal louvres specially designed to cover large surfaces, improve directional light flow and avoid glare. Adjustable bracket.

FOR MARINE ENVIRONMENTS optional with certified **anti-saline coating** available and doesn't affect the heat dissipation of the fixture. For chemical environments there is an optional anti-corrosion coating available.

LED Driver IP67, rectangular grey, adjustable 1-10V. Complete with IP68 Connector.

LED 3535 module [L80B10] with superior efficacy **up to >178 lm/w.**

Estimated useful life superior to >100.000 hour.

5 years manufacturers warranty, (optional 10 year).

Available light colors 2700K, 4000K and 5000K (standard color 4000K) CRI >70.

Voltage 95/270V 48/63Hz.

Protection IP66 IK08 (On request IK10).

Power factor $\geq 96\%$ ($\cos \phi \geq 0,96$).

Overvoltage protection 6KV.

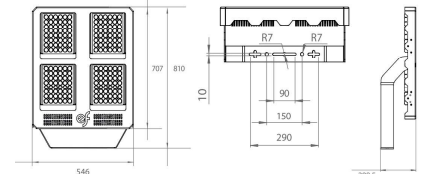
Breather valve equals temperature inside and outside, reducing temperature and prevent condensation inside

Ambient temperatures $-40^{\circ}\text{C} - +60^{\circ}\text{C}$.

Total weight 34 kg.

Optional available with emergency battery, optional movement sensor, optional DALI protocol, RMS, CRI 80 and CRI 90, optics 10° , 30° , 60° , 90° , symmetric 120° , VSM 150° .

Developed and produced in SPAIN EU.



Article No.	Description	Wattage	F-Lumen	LxWxH mm
83NTE1640	PM-COLOSSUS 140K	800/860	13.1191	546 x 810 x 299
83NTE1641	PM-COLOSSUS 160K	900/968	149.390	546 x 810 x 299
83NTE....P	Optional Anti Saline Coating	-	-	-

