

# Data Link GalaLED IP66/67 IK10

## DataLink GalaLED portable worklight

GalaLED is a revolutionary model of portable, temporary work lighting intended for use in the marine industry - shipbuilding, ship repair and maintenance, offshore, oil and gas and construction industries. An ideal strong light LED fixture with no glare effect. Maintenance free.

Due to its low, safe operating voltages - 24VAC, 42VAC, 110VAC/VDC and 24 VDC all GalaLED lighting models can reliably and safely be used during various technological phases and work processes - steel work, sandblasting, high-pressure wash and anti-corrosion protection.

All GalaLED lighting models are made of the same high-quality robust materials that make them very resistant without the risk of damage or breakage. The lamps have IP67 degree of protection and mechanical protection IK10.

Compared to traditional work lamps, Gala LED lamps are very practical and easy to use.

The GalaLED work lighting system contributes to increased productivity and safety of workers in accordance with the CENELEC norm HD63751 and increased efficiency of all work processes.

The GalaLED lighting system makes your service and processes cheaper, faster and more competitive.

### The GalaLED work lighting system generates significant financial savings in:

Energy consumption > 80% in comparison with traditional work lighting.  
Equipment and material used for the new lighting system.  
Lighting maintenance costs.  
Lighting installation time.

GalaLED lamps have a very simple connection to the power supply. They can be connected to three dimensions of cable - 2 x 1,5mm<sup>2</sup> and 2 x 2,5mm<sup>2</sup> for short lines and 2 x 6mm<sup>2</sup> for longer lines with a bigger number of lamps connected in a series.

The cable connection is located at the top cover of the lamp and is very strong and resistant to shocks and pulls. The innovative cable connection makes it possible to use the lamp individual or as daisy chain connection. The system allows a quick setup and removal.

### Technical specifications:

#### Electrical Characteristics:

Nominal Voltage: 24-42Vac (ST02), 24-42Vac (BA02), 24Vdc (ST21), 110Vac (ST11), 230Vac (LT03).  
Operating Voltage: 20-48Vac/20-60Vdc (ST02), 20-48Vac/20-60Vdc (BA02), 20-30Vdc (ST21), 80-120Vac/90-130Vdc (ST11) and 200-250Vdc (LT03).  
Total power consumption ~17W (ST02), ~12W (BA02), ~17W (ST21), ~17W (ST11), ~12W (LT03).  
Power Factor: ≥0.99 at 24Vac (ST02), >0.99 at 24Vac (BA02), ~0.6 at 110Vac, ~0,7 at 230Vac.  
Total Harmonic Distortion: at 42V/25W ~8%, at 230V/30W ~13%.  
Operating Temperature: -40°C to +50°C

#### Light Technology Characteristics:

Initial Total lumens: ~1.900lm for the ST02, ~1.300lm for the BA02, ~2.000lm for the (ST21), ~2.000lm for the ST11 and ~1.300lm for the LT03..  
Luminaire efficacy: ~110lm/W for the ST02, BA02 and LT03 and ~120lm/W for the ST11 and ST21.  
CCT: ~5.000K.  
CRI: 80-85.  
Illumination angle: 360°. For the 230Vac also possible in 120°.

#### Protection and Construction:

IP and IK Protection: IP66, IP67 and IK10.  
Protections: OVP (Over Voltage Protection), OTP (Over Temperature Protection).  
Diffuser: PMMA 2.5mm.  
Housing: PMMA, PA6, PC, ABS.  
Removable Protective Cover: Polycarbonate 2.5-3mm.  
Gasket: Silicone Gasket.  
Connecting Terminal: Piercing Connector for flat cable.  
Connection Cable: H05RNH2-F 2x1.5mm<sup>2</sup> or 2x2.5mm<sup>2</sup>.  
Fixture Weight: 0.65kg for the ST02, ST11, ST21 and 0.53kg for the BA02, LT03.  
Lifespan (on 25°C): 50.000 hours.



Article No.	Description	Type	Lumen	Color
580100	GalaLED 24-42Vac 17W 360°	ST02	1.900	5.000K
580101	GalaLED 24-42Vac 12W 360°	BA02	1.300	5.000K
580102	GalaLED 110Vac 17W 360°	ST11	2.000	5.000K
580103	GalaLED 24Vdc 17W 360°	ST21	2.000	5.000K
580104	GalaLED 230Vac 12W 120°	LT03	1.300	5.000K
580105	GalaLED 230Vac 17W 360°	ST23	1.900	5.000K

### GalaLED Accessories:

Article No.	Description
580106	GalaLED Protective cover for ST02, ST11, ST21, ST23
580110	GalaLED Magnetic Cable Holder
580113	GalaLED Angled Magnet Mounting Bracket
580112	GalaLED End Piece for Flat Cable
580111	GalaLED Schuko Plug for Flat Cable
98DONN18426D3	GalaLED Flat Cable 2x2.5mm <sup>2</sup> per meter

### GalaLED ST Types Dimensions :

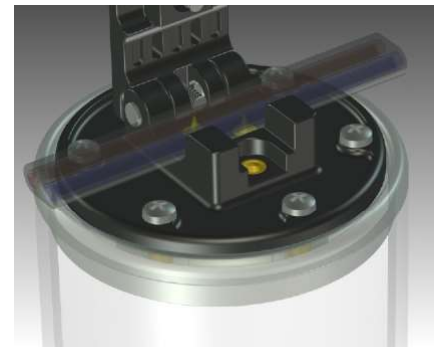
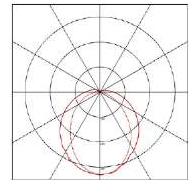
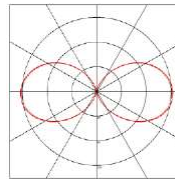
Article No.	A	B	C
ALL ST Numbers	ø90mm	280mm	300mm

DATA LINK



Polar Curve GalaLED 360°

Polar Curve GalaLED LT 120°



Article No.	Description
605165	Safety Transformer 230Vac-24Vdc 16A 100VA with 1 CEE outlet
605166	Safety Transformer 230Vac-24Vdc 16A 200VA with 2 CEE outlet
605167	Safety Transformer 230Vac-42Vac 16A 315VA with 2 CEE outlet
605168	Safety Transformer 230Vac-42Vac 16A 630VA with 2 CEE outlet
77BALS004422	CEE Plug Male 2-pole 24V 16A 0H Violet
77BALS004423	CEE Plug Male 2-pole 42V 16A 12H Grey

### GalaLED BA & LT Types Dimensions :

Article No.	A	B	C
58010 & 580104	ø90mm	210mm	230mm