

Data Link DL-SEAL LED IP67 IK10

DataLink DL-SEAL LED

DL-SEAL is a linear lamp developed and designed to illuminate access areas to docks, stairways, passageways and other humid working areas. No Glare effect. An excellent thermal management for a good lifespan.

Luminaire is made out of high quality non-corrosive materials - PMMA, ABS, polycarbonate and stainless steel and it meets the IP67 and IK10 protection requirements. The lamp is watertight and designed to operate in areas exposed to humidity due to its highly resilient construction which is resistant to corrosion and water jets.

The lamp has a cylindrical form - 650mm and 1250mm in length and 90mm in diameter with a cable entry in one end. It is fastened with two spring clips which are easily snapped onto the two ends of the tube. Due to the choice in mounting brackets must they be ordered separate.

The lamp can be fixed in any position on metal walls or ceilings with screws or with special magnetic attachments, each holding up to 5kg of pulling force.

It is possible to lower the lamp from the ceiling by using two cables and adjusting the height. By turning the lamp with clamps, it is possible to direct the light beam in any desired direction.

The DL-SEAL lamp comes in two versions:

1. Standard model with lumen output of 3.000lm and maximum power consumption of 25W and a longer version with 6.500lm and maximum power consumption of 55W.
2. Emergency lighting model in the event of power failure.

Technical specifications:

Electrical Characteristics:

Nominal Voltage: 230 50/60Hz
 Operating Voltage: 100 - 305Vac, 110-430Vdc
 Total power consumption ~25W and ~55W
 Power Factor: >0.97 at 230Vac
 Total Harmonic Distortion: Ithd ~20 %
 Operating Temperature: -20°C to +50°C

Light Technology Characteristics:

Initial Total lumens: >3.000lm for the 25W and min. 450lm in emergency mode.
 Initial Total lumens: >6.500lm for the 55W and min. 450lm in emergency mode.
 Emergency Light: 2.5h autonomy. 8h charging time, Battery NiCad.
 Luminaire efficacy: ~120lm/W.
 CCT: ~5.000K.
 CRI: 80-85.
 Illumination angle: 120°.

Protection and Construction:

IP and IK Protection: IP66 and IK10.
 Protections: OVP (Over Voltage Protection), OTP (Over Temperature Protection).
 Luminaire inner Protective Cover: PMMA 2.5mm.
 Removable Protective Cover: Polycarbonate 2.5-3.0mm.
 Housing: PMMA, PA6, PC, ABS.
 Gasket: Silicone Gasket.
 Cable Entry: Cable gland suitable for cable diameter 6-13mm.
 Fixture Weight: 25W 2.1kg and 2.5kg for emergency option.
 Fixture Weight: 55W 3.5kg and 3.9kg for emergency option.
 Lifespan (on 25°C): 50.000 hours.

* Emergency model only works on 110Vac or 230Vac. Important to choose the required voltage when ordering.

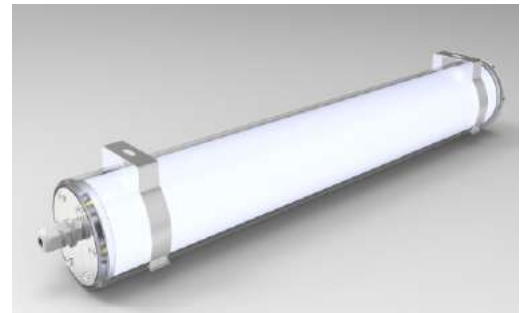
Article No.	Description	Lumen	Color	Emergency
580300	DL SEAL 25W 230V 56/60Hz	3.000	5.000K	-
580301	DL SEAL 25W 230V 56/60Hz Em.	3.000 + 450 (em)	5.000K	YES
580302	DL SEAL 55W 230V 56/60Hz	6.500	5.000K	-
580303	DL SEAL 55W 230V 56/60Hz Em.	6.500 + 450 (em)	5.000K	YES

DL-SEAL Choice in mounting brackets:

Article No.	Description
580310	Mounting bracket set Magnetic
580311	Mounting bracket set with chain suspension
580312	Mounting bracket set with cable suspension
580313	Mounting bracket set with nut and screw

DL-SEAL Dimensions :

Article No.	A	B	C	D	E
580300	650mm	ø90mm	105mm	400-550mm	2 x ø6mm
580301	650mm	ø90mm	105mm	400-550mm	2 x ø6mm
580302	1250mm	ø90mm	105mm	1000-1150mm	2 x ø6mm
580303	1250mm	ø90mm	105mm	1000-1150mm	2 x ø6mm



Polar Curve DL-SEAL

